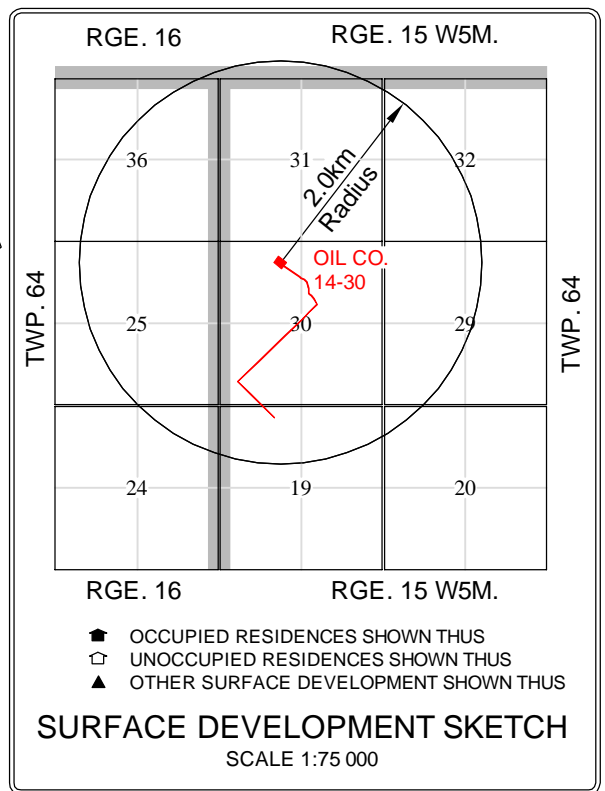


**ACCESS ROUTE MAP**  
SCALE 1:250 000

NEAREST SURFACE DEVELOPMENT IS THE TRAPPER'S CABIN ±3.3 km S.E. OF THE WELL CENTRE  
NEAREST URBAN CENTRE IS THE TOWN OF FOX CREEK ±27.2km S.W. OF THE WELL CENTRE



**SURFACE DEVELOPMENT SKETCH**  
SCALE 1:75 000

ACCESS TABLE			
	OWNER	ROAD	LENGTH
A	NORTHERN SUNRISE COUNTY	HWY. 986	±13.2km
B	SHELL	MSL 11695	±5.1 km
C	SHELL	MSL 880303	±6.1 km
D	OIL CO.	LOC 041858	±8.2 km
E	OIL CO.	LOC 041934	±0.3 km
F	OIL CO.	LOC 041375	±1.3 km
G	OIL CO.	MSL 042386	±0.08 km

Plan showing survey of  
**OIL COMPANY KAYBOB 14 - 30 - 64 - 15**  
Well Site and Access Road within theoretical  
**L.S. 14 Sec. 30 Twp. 64 Rge. 15 W.5 M.**  
**M. D. of GREENVIEW**

**WELL CENTRE LOCATION**

W/C CO-ORDS. (Bdy. of Sec.30)	NAD 27 DATUM (ATS Ver. 3.2)		NAD 83 DATUM (ATS Ver. 3.2)	
	GEOGRAPHIC	U.T.M.	GEOGRAPHIC	U.T.M.
200.0 South of North 600.0 East of West	Latitude: 55.317359 Longitude: -115.836431	Northing 6 235 200.3 Easting 505 118.1	Latitude: 55.317426 Longitude: -115.837743	Northing 6 235 421.0 Easting 505 036.5

**ELEVATION:** 627.6 = Ground @ Well  
DATUM: ASCM 180919 = 620.185m  
SEE WELL DETAIL FOR ELEVATIONS

AREA:	HECTARES	ACRES
Well Site	0.800	1.97
Access Road	1.722	4.26
<b>TOTAL</b>	<b>2.522</b>	<b>6.23</b>

**SURFACE LAND STATUS: CROWN**

**EUB LICENSING INFORMATION**

The proposed well centre:

- is 100m from any surface improvements. YES NO  
■ □
- is 100m from any occupied dwelling. ■ □
- is 100m from the normal high water of any significant body of water. ■ □
- is 40m from any surveyed road. ■ □
- is 200m from any petroleum or domestic well. ■ □
- is 1.5km from the corporate limits of an urban centre. ■ □
- is 1.6km from an unlighted airport. ■ □
- is 5.0km from a lighted airport. ■ □
- The well is outside any potential Coal Development Area. ■ □
- The well is outside any Designated Historical Site Area. □ ■
- The well satisfies A.E.P. Land Reclamation Guidelines. ■ □

I, \_\_\_\_\_ Alberta Land Surveyor, of Calgary, Alberta, certify that the survey represented by this plan is true and correct to the best of my knowledge, has been carried out in accordance with the Alberta Land Surveyors' Association Manual of Standard Practice, and was completed on the 18th day of January, 2005.

ALBERTA LAND SURVEYOR

WITNESS



**GLOBAL SURVEYS**

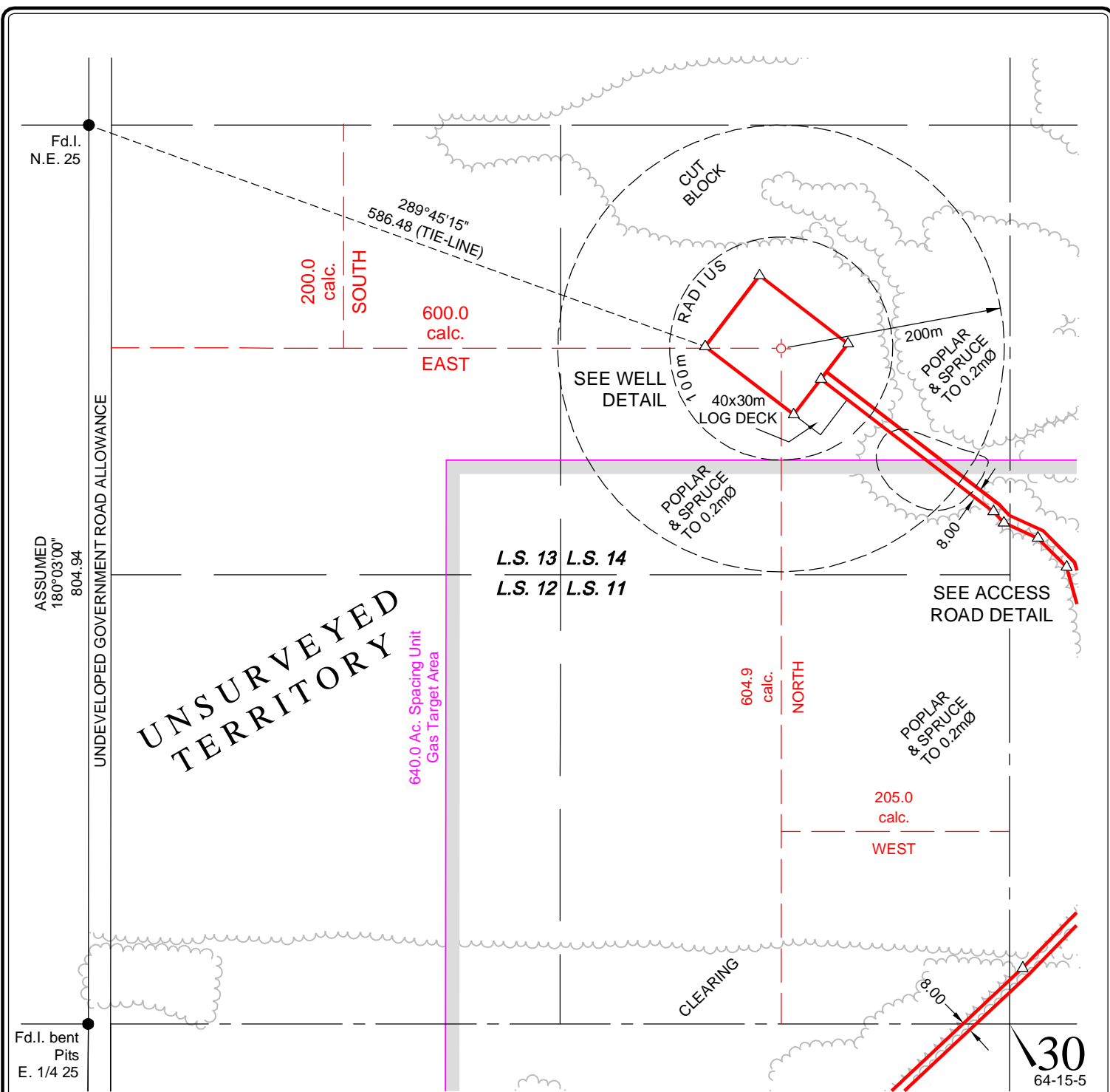
Ph: 403.283.5455  
Fax: 403.283.5418



**OPERATOR:**  
**OIL COMPANY LTD.**

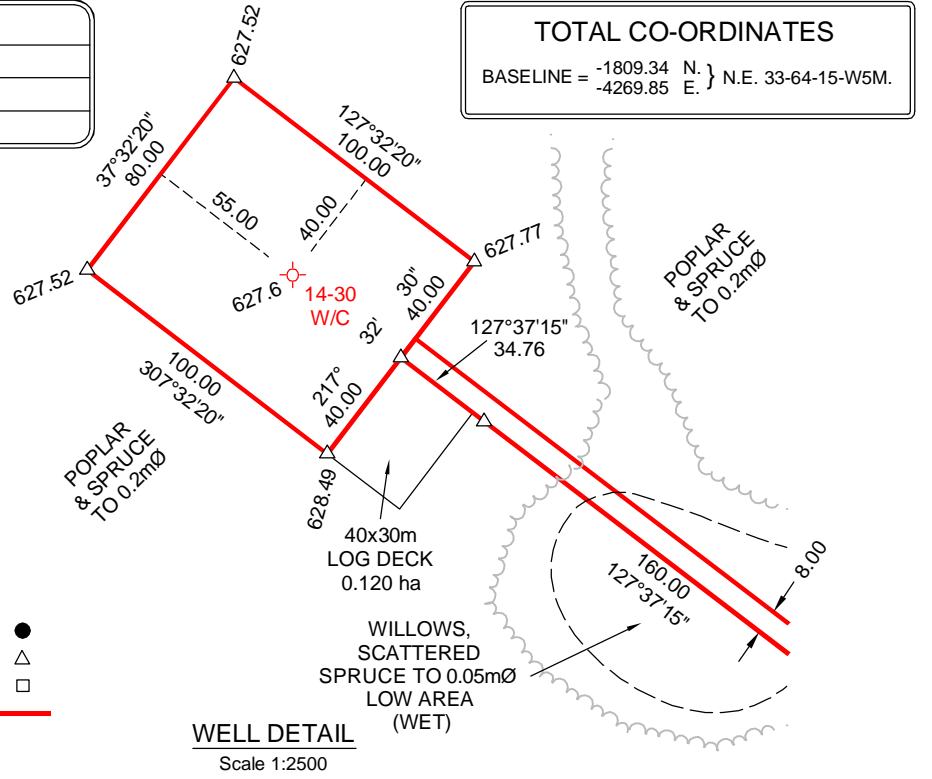
TRANSACTION No. \_\_\_\_\_

Surveyed by: XX    Drawn by: XXX    Checked by: XX    Job No. XX-XXXX



DISPOSITION LIST (SEC. 30)	
FMA: 8900027	DAISHOWA-MARUBENI INT.
CNC: 820020	SHELL CANADA LIMITED
TPA: 1289	ROY, ROMEO

TOTAL CO-ORDINATES	
BASELINE = -1809.34 N.	} N.E. 33-64-15-W5M.
-4269.85 E.	



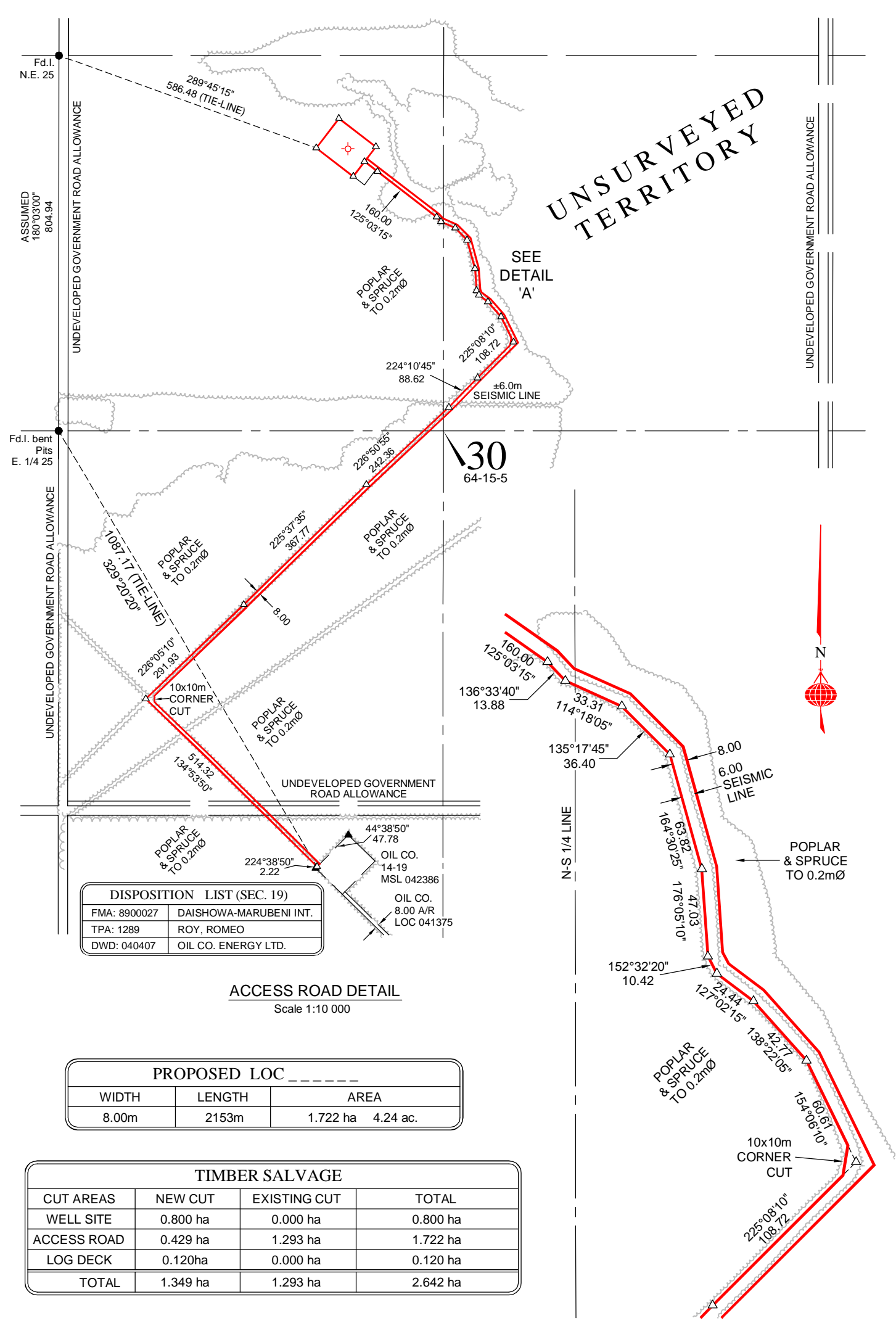
**LEGEND:**

- Survey monuments (Iron Post) found shown thus: ●
- Survey marks (0.30m Spike) planted shown thus: △
- Survey marks (Hub) planted shown thus: □
- Portions referred to shown thus: —
- Distances are in metres and decimals thereof.
- Bearings are astronomic and referred to the Central Meridian through Twp. 64 - Rge. 15 - W5M.

OIL COMPANY KAYBOB 14-30-64-15 (W.5 M.)					Job No. XX-XXXX	
REV	SURVEYED BY:	DRAWN BY:	CHECKED BY:	DESCRIPTION	DATE:	
0	XX	XXX	XX	ORIGINAL PLAN	2006-01-01	

**GLOBAL SURVEYS**  
 Ph: 403.283.5455  
 Fax: 403.283.5418

UNSURVEYED TERRITORY

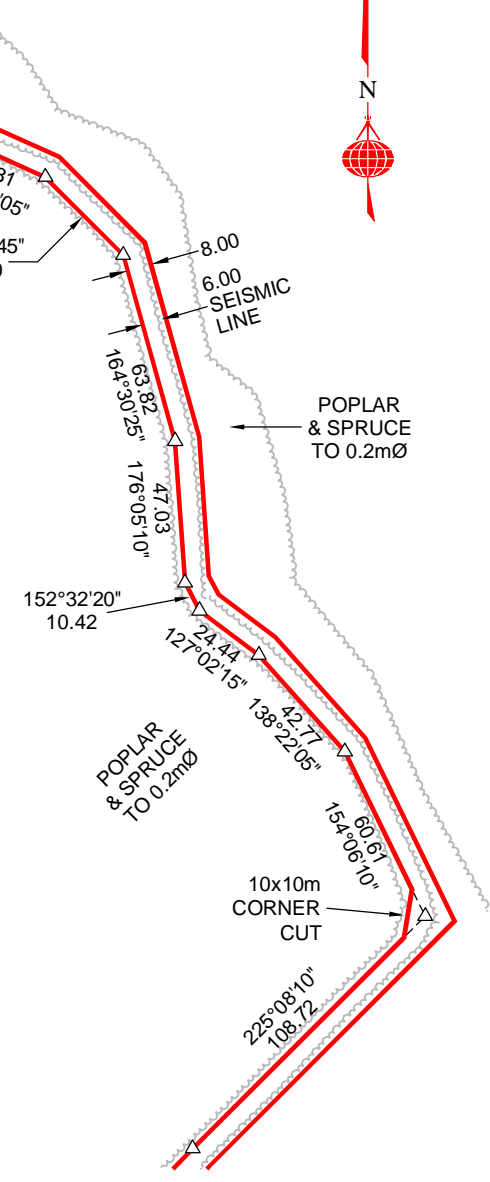


DISPOSITION LIST (SEC. 19)	
FMA: 8900027	DAISHOWA-MARUBENI INT.
TPA: 1289	ROY, ROMEO
DWD: 040407	OIL CO. ENERGY LTD.

**ACCESS ROAD DETAIL**  
Scale 1:10 000

PROPOSED LOC			
WIDTH	LENGTH	AREA	
8.00m	2153m	1.722 ha	4.24 ac.

TIMBER SALVAGE			
CUT AREAS	NEW CUT	EXISTING CUT	TOTAL
WELL SITE	0.800 ha	0.000 ha	0.800 ha
ACCESS ROAD	0.429 ha	1.293 ha	1.722 ha
LOG DECK	0.120ha	0.000 ha	0.120 ha
<b>TOTAL</b>	<b>1.349 ha</b>	<b>1.293 ha</b>	<b>2.642 ha</b>



**DETAIL 'A'**  
Scale 1:2 500

**OIL COMPANY KAYBOB 14-30-64-15 (W.5 M.)** Job No. XX-XXXX

REV	SURVEYED BY:	DRAWN BY:	CHECKED BY:	DESCRIPTION	DATE:
0	XX	XXX	XX	ORIGINAL PLAN	2006-01-01



**GLOBAL SURVEYS**  
Ph: 403.283.5455  
Fax: 403.283.5418